

■ MAC COMBI 1400 GE



- Only a few seconds for a custom size box to you requirements
- Format change and setting in 4 minutes
- 1 operator does it all

Designed to produce ready to use boxes in just one pass, the Mac Combi 1400 GE cut, crease, slot, glue and even print.

INFOMAC SOFTWARE manages online costs and maintenance.

Z.E. La Penotte - 16410 GARAT - FRANCE
Tél : 33 (0)5 45 25 06 06
Fax : 33 (0)5 45 25 04 12
commercial@mecanelec.com - www.mecanelec.com

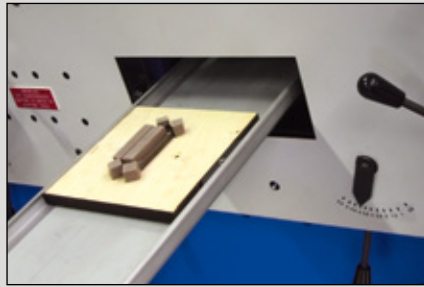


Mécanélec

MAC COMBI 1400 GE



Option 1



Option 2

AUTOMATIC FEEDER

- Standard size: 1400 x 3000 mm
- Special friction feeder (Mecanelec Patent)

ONE PASS ONLY

- Length and cross creasing
- Sides and cross cuts
- Slotting and glue flap cuts
- Special cuts (**option 1 or 2**): handles, dividers, joining flaps, air holes
- Flap gluing
- Optional Inkjet printing 1 or 2 colors

LAYOUT

Depending on desired box sizes, the MAC has the capacity to make several boxes from the same blank for optimal production. Standard equipment 2 boxes up front with an optional third one.

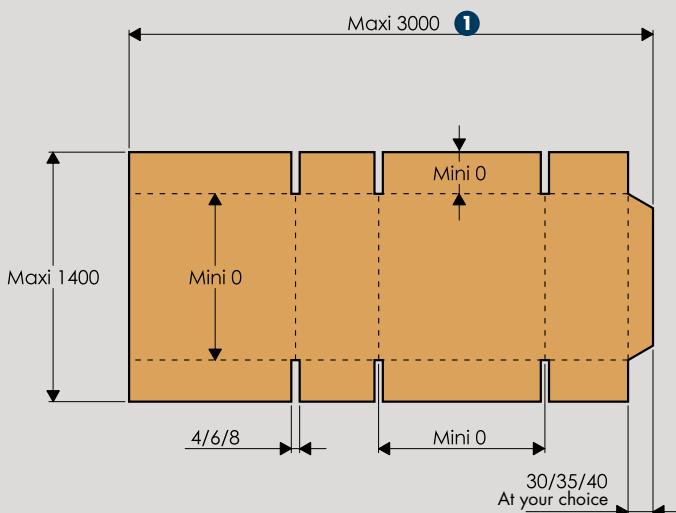
AVERAGE PRODUCTION

Production depends on gluing speed which is in average of 600 boxes per hour ie: 1 box every 6 seconds. Some skilled operators can reach a production of 1000 boxes per hour.

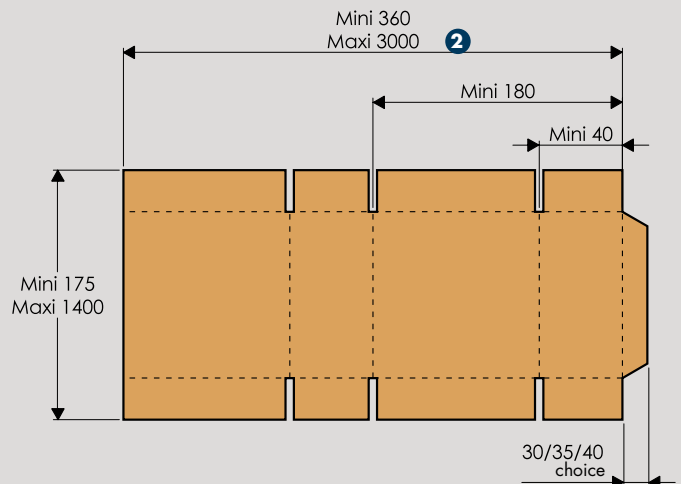
TECHNICAL DATA

- Automatic feeder , pile height: 1050 mm
- Running speed: 0 to 1600 mm/sec.
- Slotting/creasing speed: 0,6 sec.
- Minimum gap between 2 creasing: 0 mm
- Required air supply: 7 bars
- Required power supply: 8 kW 380 Volts three phase
- Corrugated Stock thickness: 1,5 to 8 mm

CUTTING CAPACITY

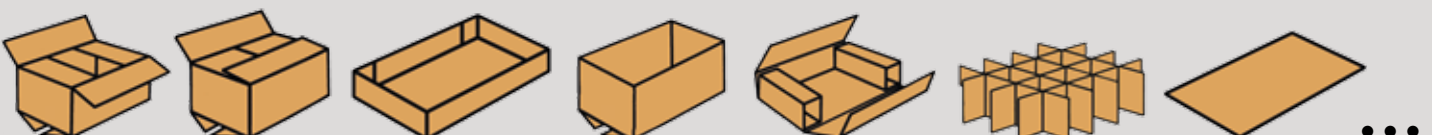


GLUING CAPACITY



① 3000 mm with standard feeder.
For very long dimensions, manual feeder (unlimited length)

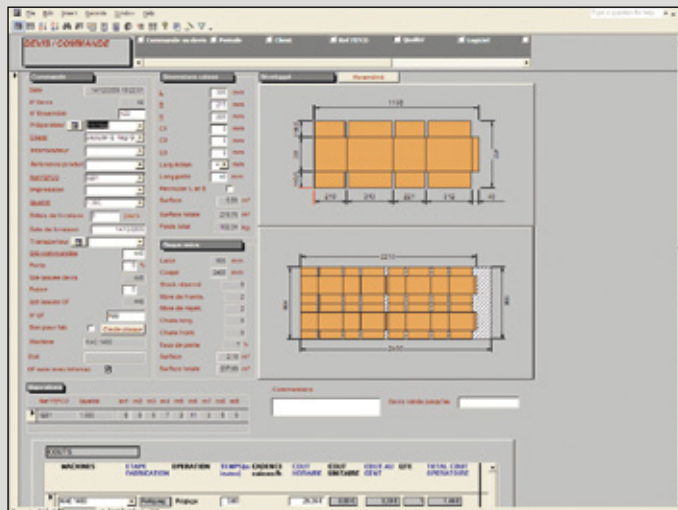
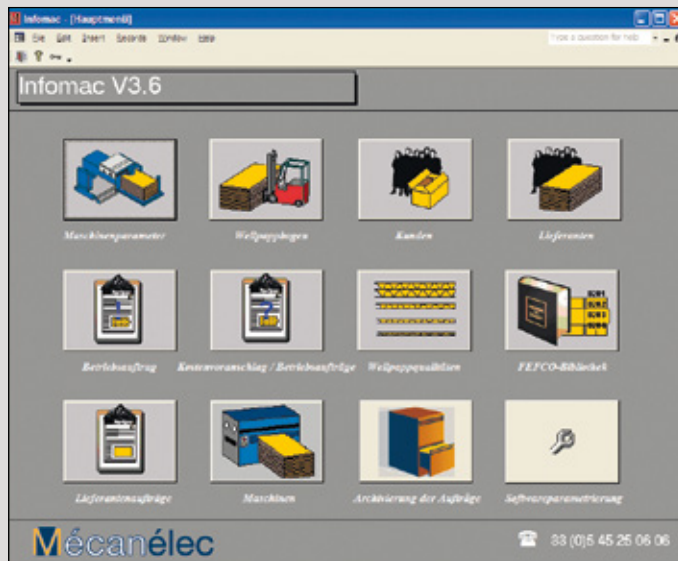
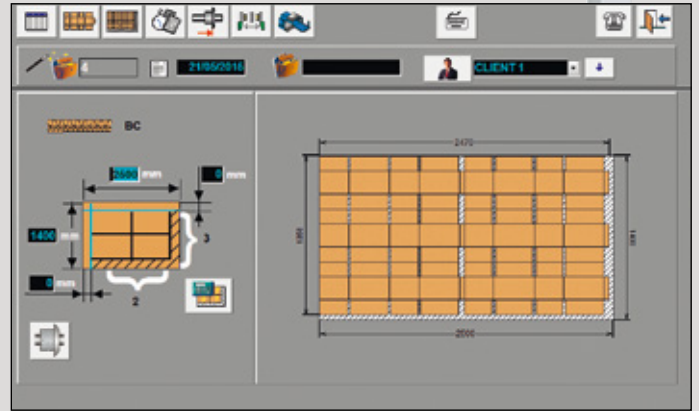
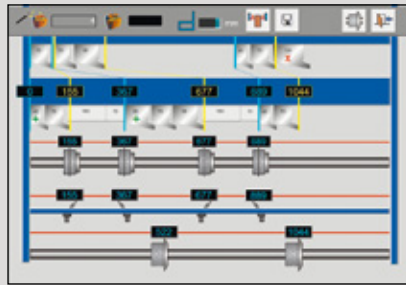
② 4500 mm optional



VISUMAC

VISUMAC IS THE OPERATING SYSTEM SOFTWARE OF THE MAC 1400 GE

- Totally graphic and user-friendly
- Direct settings or orders down loaded from INFOMAC
- Instant display of box design and layouts
- Recording and queuing of manufacturing orders
- Cutting tools setting assistance insuring the minimal tool handling time
- Clear graphical display of safety guards and running conditions
- Faults filing with on line management and maintenance possibilities by Webcam
- Operator's training with a tutorial video.



INFOMAC

QUICK AND EASY SOFTWARE

NO TIME WASTED, NO PAPER FILES, NO DOUBLE ENTRIES BETWEEN OFFICE AND PRODUCTION

The operator automatically gets the orders from the dedicated PC on the network without having to re-enter manually from paper files. The operator can sort out and queue the orders as needed, by customers or blanks stock availability

ESTIMATION AND ORDERS IN A FEW CLICKS

Only a few clicks are necessary for an estimate, one other click to make it into an order and generate auto request of blank supplies.

ACCURATE AND FLEXIBLE

In order to minimise waste and cost INFOMAC will advise you on what blank format to use for a specific box size. Set the average production cycles for certain types of work. On the Mac 1400 production time is accurately calculated upon number of operations and necessary cuts

FILES

FEFCO FILES, BOARD QUALITIES, CUSTOMERS WITH CONTACT LIST, ESTIMATES AND ORDERS, BOARD SUPPLIERS, BLANKS ORDERS, BLANK STOCKS, MACHINES WITH THEIR SPECIFICATIONS

INFOMAC

OPEN SOFTWARE

INFOMAC is developed on a Microsoft friendly data base so your data can be used by other applications. Data such as customers an quality can be imported from other sources in order to save you a long a fastidious import.

ASSISTANCE

Downloadable on our web server, online assistance via internet.

CAD MODULE

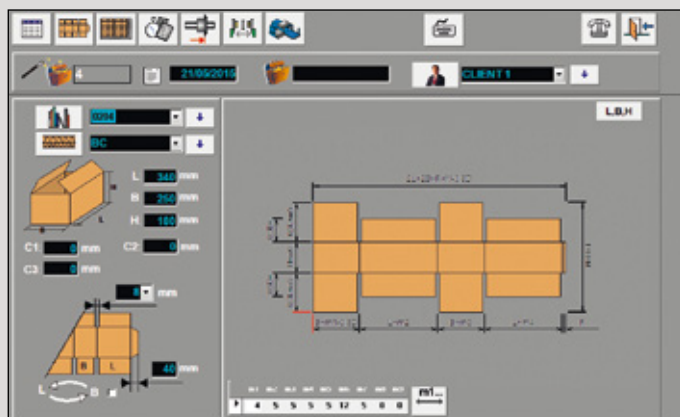
With a minimum work you can create new types of boxes with L,B,H parameters and further calculate endless box layouts for your estimates.

CUSTOMERS

In one click, see the orders produced for each customer, ongoing orders and detailed quotations.

FINANCIAL REPORT

You can get a cost report for each order, each customer as well as a global business volume for a set time span.

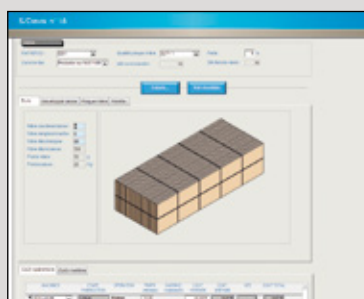
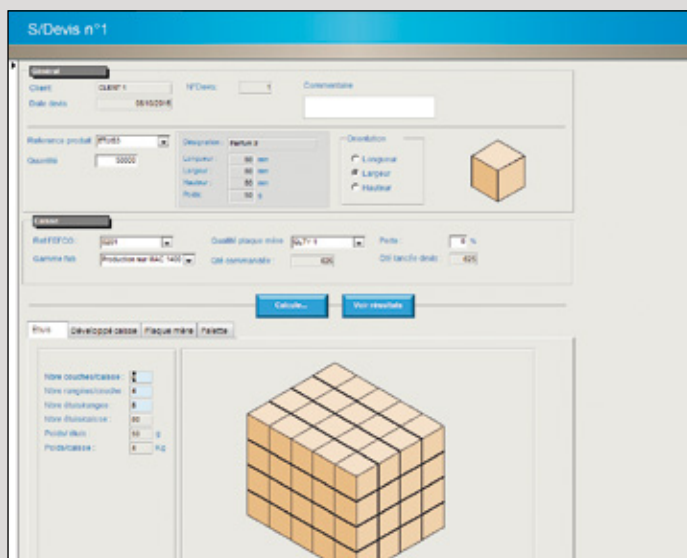


OPTIMAC

The Optimac module calculates the optimal box size to pack your products A perfectly adjusted box, depending on sizes and numbers of articles desired in one box, for your folded cartons, erected boxes, paper bundles, books or any other products. Taking in account the number of boxes per palettes.

It offers a great number of solutions with multi filters based on criteria such as maximum and minimum number of products per box, dimensions, numbers of layers, rows ext...

The choice of one selection is instantly displayed in 3D before for final checking. Once the most satisfactory layout is chosen the most adapted blank selection is made and price calculation automatically done.



Mécanélec

Z.E. La Penotte - 16410 GARAT - FRANCE - Tél : 33 (0)5 45 25 06 06 / Fax : 33 (0)5 45 25 04 12

e-mail : commercial@mecanelec.com - www.mecanelec.com